

A sunset over a body of water with a purple overlay at the top containing a white number 4.

4

## Public Outreach

## A. Public Involvement Plan

As part of the 2045 RTP process, the NFRMPO updated the Public Involvement Plan (PIP). The NFRMPO Planning Council adopted the 2019 PIP on March 7, 2019. The 2019 PIP builds on the successes and lessons learned from the 2015 PIP. Strategies from the 2019 PIP were incorporated into the development of the 2045 RTP. Application of these strategies are explained in the following sections.



Major updates to the 2019 PIP impacting the 2045 RTP process include:

- Environmental Justice (EJ) data was updated to the Census Block Group level, providing more neighborhood and demographic nuance;
- Improved outreach materials showing meeting dates and times, the planning process, and how to include the public; and
- Evaluation of the public outreach process, the data collected, and how it is incorporated into the NFRMPO’s planning process.

Application of the strategies explained in the 2019 PIP to the 2045 RTP are explored below.

## B. Process

As outlined in the 2019 PIP, the public was notified of and involved in the development of the Plan through:

- Posting on the NFRMPO’s [website](#), [Twitter](#), and [blog](#);
- Online and in-person surveys;
- Attendance and presentations at local meetings and events throughout the region;
- Publication of events, dates, and updates in the quarterly [On the Move](#) Newsletter;
- Creation of the [2045 RTP website](#); and
- Creation of a [Community Remarks website](#).



The NFRMPO used a variety of online tools to reach out to the public, ensuring up-to-date and interactive tools were made available.

- Events and meetings were posted as they were scheduled and were tweeted on the NFRMPO’s Twitter account (@NFRMPO).
- The NFRMPO posted draft chapters, meeting schedules, and contact information on its website. The website was updated often to ensure the most current information was available.
- The Community Remarks site allowed the public to provide comments on a Google Maps-based website. The tool allowed users to “vote up” and “vote down” comments, which streamlined comments and provided additional interactivity. Those who “vote down” a comment were required to explain their dislike or disapproval, allowing additional input which could be

incorporated into the 2040 RTP.  
[communityremarks.com/northfrontrange/](https://communityremarks.com/northfrontrange/)

The NFRMPO used two surveys to distinguish the needs of the region in the existing and future transportation systems. Surveys provided staff a direct understanding of regional transportation issues; where, how, and why people commute; and what modes of transportation are impacted by congestion or are used most often.

The first survey, open through summer 2018, engaged the public in where residents live, work, commute, and what their overall concerns were. The second survey, available in winter and spring 2019, requested input on scenarios to be included in the 2045 RTP.

Both surveys took advantage of the partnerships the NFRMPO has formed with community groups. Versions of each survey were sent to the Larimer County and Weld County Mobility Committees, VanGo™ vanpoolers, *On the Move* recipients, members of the Northern Colorado (NoCo) Bike & Ped Collaborative, and multiple senior groups. Paper copies of the survey and business cards with the survey link were also

distributed at the events and meetings staff attended.

Staff coordinated public outreach at multiple events and meetings throughout summer 2019. To reach a wide audience, the NFRMPO made efforts to attend a diverse group of meetings within the region. When possible, the NFRMPO worked with other agencies and organizations. The events mixed presentations, staffed tables, and face-to-face interactions to both inform the public about the 2045 RTP process and obtain feedback. At these meetings, staff discussed regional transportation issues with the public and community groups.

Public comment periods were provided for the FY2020-2023 Transportation Improvement Program (TIP), the 2019 PIP, and the 2045 RTP. The 2019 PIP was released for 45 days, while the 2019 TIP and 2045 RTP were released for 30 days. The 2045 Regional Transit Element (RTE) was released for 30 days and information was incorporated into the 2045 RTP.

## C. Limited English Proficiency (LEP) Populations

The NFRMPO updated its LEP Plan as part of the update to the [Title VI Plan](#) and [2019 PIP](#). Spanish is spoken by 10.8 percent of the residents in the NFRMPO region. When possible, the NFRMPO translates documents into Spanish or works with partners during the outreach process to ensure the [2045 RTP](#) reflects the needs and priorities of all residents.

NFRMPO staff worked with local communities and attended events and meetings where all residents attended. Evans, Fort Collins, Garden City, Greeley, Johnstown, LaSalle, Loveland, and Windsor, all contain at least one Census Tract with an LEP population. NFRMPO staff attended community events in all but one location. In this location, NFRMPO staff worked with the Citizens Transportation Advisory Board (CTAB) to discuss local priorities and need.

## D. Integration

NFRMPO staff integrated public comment into the [2045 RTP](#). Many of the projects recommended by the public, including the Front Range Passenger Rail project, were not fiscally constrained. The interest, however, was acknowledged and included as a scenario project. Input from stakeholders and partner agencies ensured information within the document were current. It is expected the information collected as part of this plan will continue to be integrated into the NFRMPO's planning process and future planning efforts.

## E. Materials

On the following pages are outreach materials used throughout the [2045 RTP](#) process:

- 2045 RTP Presentation
- 2045 RTP Fact Sheet
- 2045 RTP Survey



# 2045 Regional Transportation Plan

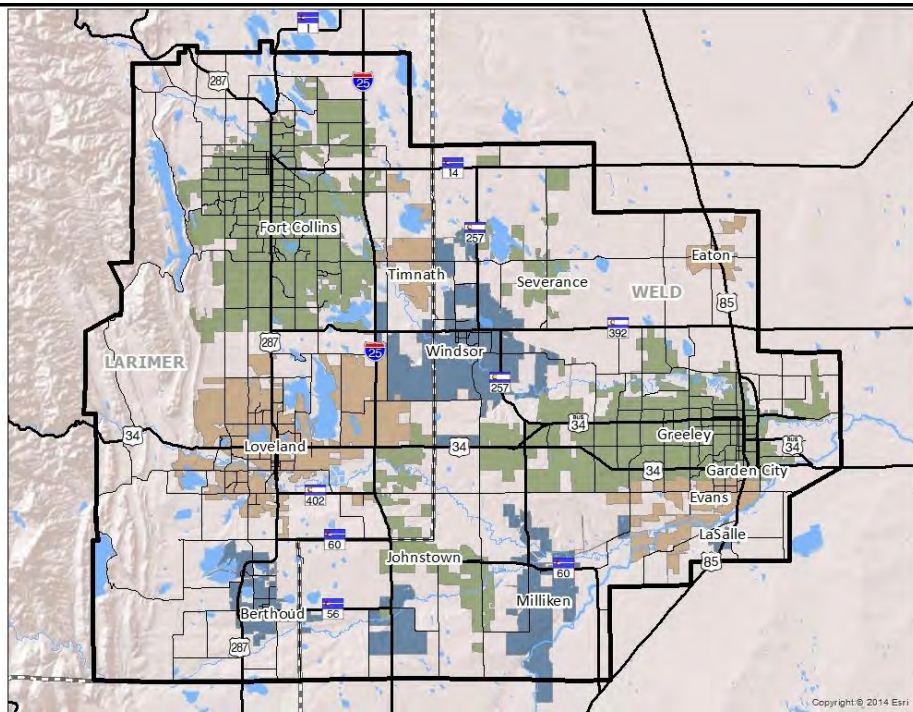
Audience



North Front Range  
Metropolitan  
Planning  
Organization

Month, Day, Year

## Regional Overview



Copyright © 2014 Esri

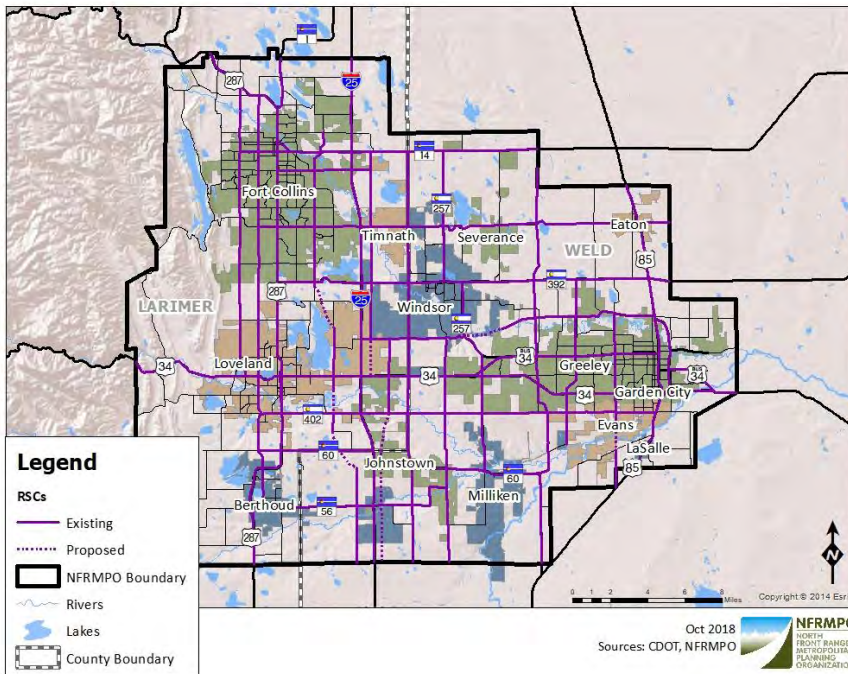
Where are we today?



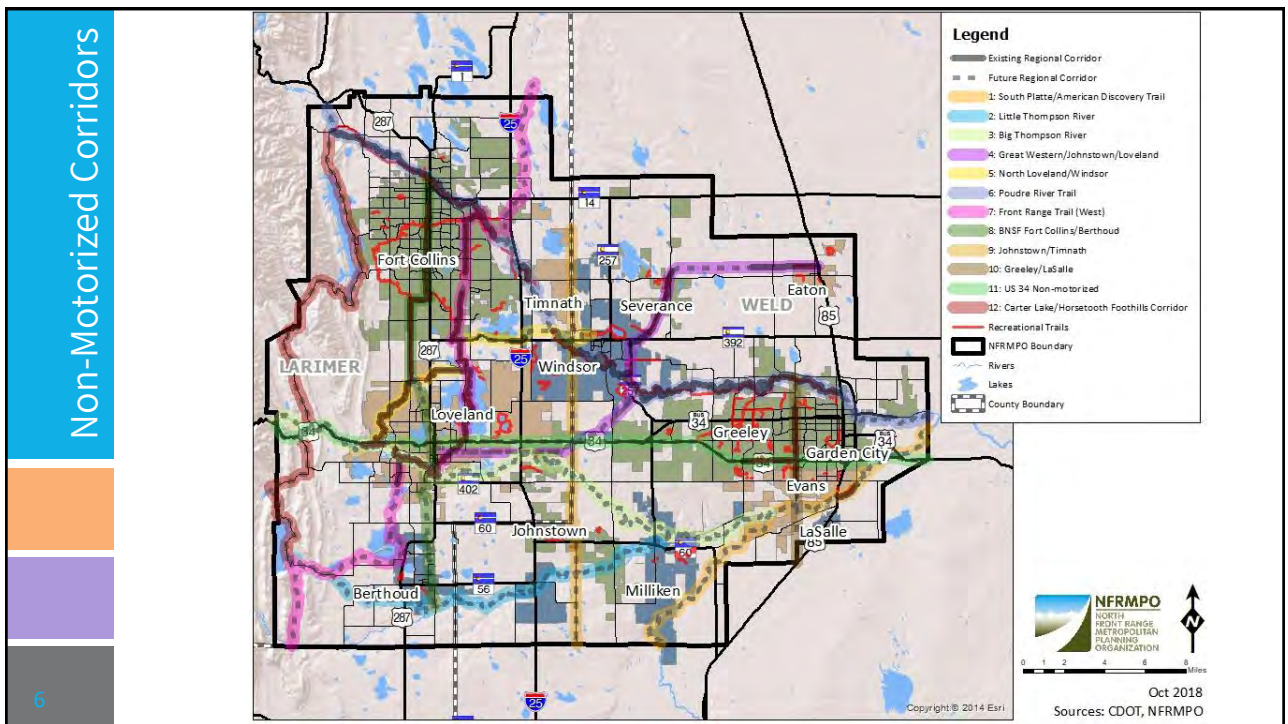
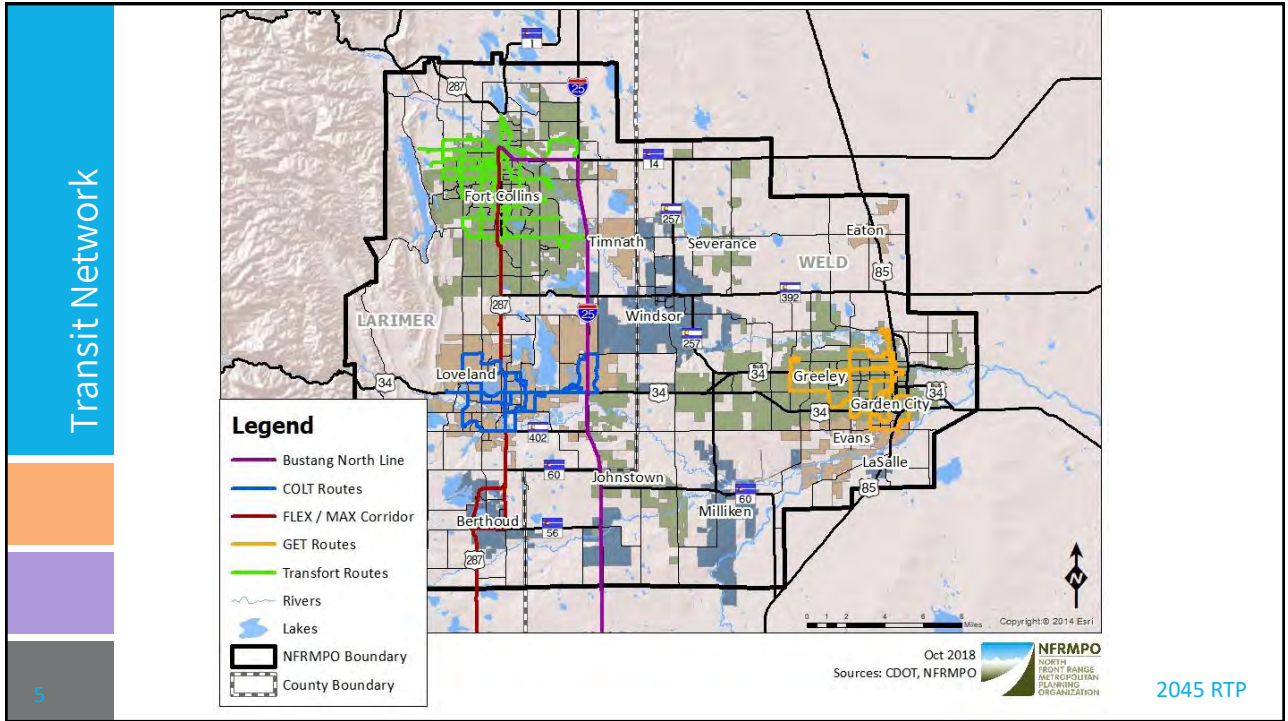
Where do we want to be?



2045 Regional Transportation Plan









## The NFRMPO Region Today

In 2015, the NFRMPO region had...

- 483,000 residents
- 284,000 jobs
- 50 Billion vehicle miles traveled (VMT)
- 4 Million Transit Trips
- 3 Million users on the Regional Non-Motorized Corridors

7

2045 RTP



## Future in the NFRMPO region

By 2045, the NFRMPO region is estimated to have...

- 883,000 residents (+82.8% over 2015)
- 473,000 jobs (+66.5% over 2015)


*Estimates provided by the Department of Local Affairs.*

Transportation impacts of these new residents and jobs will be modeled using the NFRMPO's Regional Travel Demand Model.

8



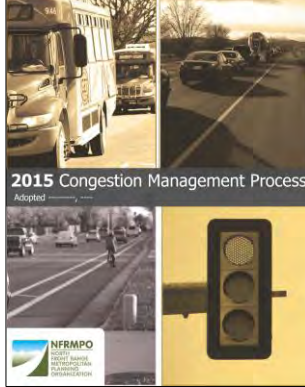
2045 RTP



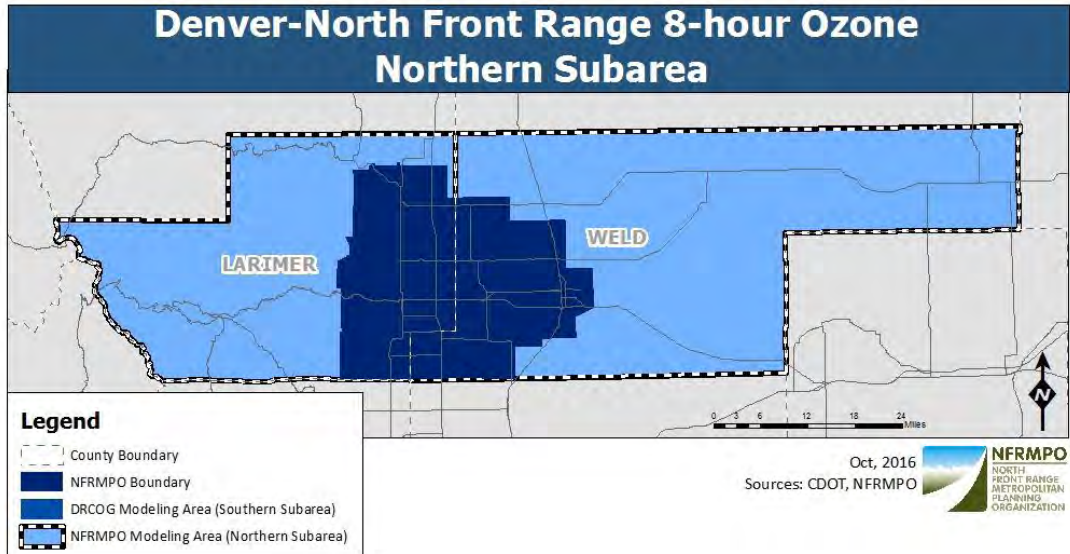


North Front Range  
Metropolitan  
Planning  
Organization

2045 RTP

<b><u>Non-Motorized</u></b>	<b><u>Transit</u></b>	<b><u>Freight</u></b>	<b><u>Congestion</u></b>
 <p style="font-size: 10px; margin-top: 5px;">NFRMPO 2016 Non-Motorized Plan North Front Range Metropolitan Planning Organization Adopted February 2, 2017</p>	 <p style="font-size: 10px; margin-top: 5px;">2045 Regional Transit Element Adopted November 1, 2018</p>	 <p style="font-size: 10px; margin-top: 5px;">FREIGHT NORTHERN COLORADO North Front Range Metropolitan Planning Organization</p>	 <p style="font-size: 10px; margin-top: 5px;">2015 Congestion Management Process Adopted _____</p>
Adopted February 2017	Adopted November 2018	Estimated Spring 2019	
9			2045 RTP

Financial Planning	BIENNIAL	<p><b>Call for Projects</b></p> <ul style="list-style-type: none"> <li>Communities apply to the NFRMPO for federal and state funding</li> <li>Competitive project selection process</li> <li>Must move region toward achieving performance measures and targets</li> <li>Underway – applications due December 21, 2018</li> </ul>
	SHORT TERM	<p><b>Transportation Improvement Program</b></p> <ul style="list-style-type: none"> <li>Four-year transportation program</li> <li>Includes federal- and state-funded transportation projects</li> <li>Updated annually</li> <li>Must show Air Quality Conformity</li> <li>Environmental Justice</li> </ul>
	LONG TERM	<p><b>Regional Transportation Plan</b></p> <ul style="list-style-type: none"> <li>20-year+ transportation program</li> <li>Incorporates TIP projects and regionally-significant projects</li> <li>Must be fiscally-constrained</li> <li>Must show Air Quality Conformity</li> </ul>
10	2045 RTP	



	PERFORMANCE MEASURE	STATEWIDE TARGET	NFRMPO BENCHMARK (year)	NFRMPO REGION TARGET
1	<b>SAFETY</b>			
	Number of Fatalities	610	32.8	
	Fatality rate per 100 million vehicle miles traveled	1.2	0.833	
	Number of serious injuries	3,350	202	Adopted State Targets
	Serious Injury rate per 100 million vehicle miles traveled	6.79	5.169	
	Number of non-motorized fatalities and serious injuries	586	34.2	
2	<b>PAVEMENT CONDITION</b>			
	Percent of pavement on Interstate System in good condition	47%	TBD	
	Percent of pavement on Interstate System in poor condition	1%	TBD	Potentially adopting State Targets
	Percent of pavement on non-Interstate NHS in good condition	51%	TBD	
	Percent of pavement on non-Interstate NHS in poor condition	2%	TBD	
3	<b>BRIDGE CONDITION</b>		(2017)	
	Percentage of NHS bridges classified as in good condition	44%	50%	Potentially adopting State Targets
	Percentage of NHS bridges classified as in poor condition	4%	7%	
4	<b>RELIABILITY (System Reliability and Freight Movement)</b>		(2016)	
	Percent of person-miles traveled on Interstate system that are reliable	81%	100%	
	Percent of person-miles traveled on non-Interstate NHS that are reliable	64%	74%	Potentially adopting State Targets
	Truck travel time reliability index	1.5	1.47	
5	<b>AIR QUALITY (CHAD ENVIRONMENTAL SUSTAINABILITY)</b>		(2013-2016)	
	VOC Reduction	105 kg/day	3.88	
	Carbon Monoxide (CO) Reduction	1,426 kg/day	56.9	Potentially adopting State Targets
	Nitrogen Oxides (NOx) Reduction	105 kg/day	0.13	
6	<b>NFRMPO-SPECIFIC</b>			
	Population and essential destinations within paratransit and demand response service area within the MPO boundary		626	At least 75%
	Non-motorized facility miles		3352	Increase by 50%
	Percent of non-single occupant vehicle commute trips		23%	At least 32%
	Fixed-route revenue hours per capita within service areas		0.65	Increase by 10%
	Daily VMT per capita		34	Daily VMT per capita + 24
	MPO-funded Projects delivered by Federal Completion Date		TBD	TBD
Travel Time Index on RSCs		TBD	90% of RSCs have a TTIndex	
Percent NHS miles covered by ITS		TBD	TBD	

## How much do transportation projects cost?

- **US34 Expansion (Denver Ave. to Boyd Lake Ave. / 1.25 miles):**  
\$2.24 Million per mile or \$2.8 Million overall (Loveland)
- **I-25 Expansion (SH14 to SH402 / 15 miles):**  
\$20.1 Million per mile or \$302 Million overall
- **Long View Trail (57<sup>th</sup> Street to Fossil Creek Trail / 4.4 miles):**  
\$880k per mile or \$3.9 Million overall (Fort Collins/Loveland)
- **Greeley Comprehensive Signal Timing (116 signals + system)**  
\$4,525 per signal or \$525k overall
- **MAX BRT (Fort Collins / 6 miles):**  
\$14.0 Million per mile or \$84 Million overall
- **Commuter rail (Fort Collins to Denver / 43 miles):**  
\$27.9 Million per mile or \$1.2 Billion overall

13

2045 RTP

**The RTP must be fiscally constrained.  
Knowing the costs of some regional projects,  
how would you allot \$2 Billion in estimated  
funding?**

- **Roadway projects** (repaving, maintenance, expansion)
- **Transit** (operating, capital, new routes)
- **Bike/ped** (trails, sidewalks, bike lanes, ADA, counters)
- **Freight** (truck parking, technology, quiet zones)
- **Technology** (ITS and signal upgrades, VMS, RoadX)

14

2045 RTP

**Future regional events:** [nfrmpo.org/calendar/](http://nfrmpo.org/calendar/)

**Social media:** @nfrmpo

**Newsletter:** [nfrmpo.org/newsletter/](http://nfrmpo.org/newsletter/)

**CommunityRemarks™:**  
[communityremarks.com/northfrontrange/](http://communityremarks.com/northfrontrange/)

**Ryan Dusil**

Transportation Planner I  
[rdusil@nfrmpo.org](mailto:rdusil@nfrmpo.org)  
(970) 224-6191

**Alex Gordon, PTP**

Transportation Planner II  
[agordon@nfrmpo.org](mailto:agordon@nfrmpo.org)  
(970) 416-2023

**Medora Kealy**

Transportation Planner II  
[mkealy@nfrmpo.org](mailto:mkealy@nfrmpo.org)  
(970) 416-2293

**Sarah Martin**

Transportation Planner I  
[smartin@nfrmpo.org](mailto:smartin@nfrmpo.org)  
(970) 416-2309

**Becky Karasko, AICP**

Regional Transportation Planning Director  
[bkarasko@nfrmpo.org](mailto:bkarasko@nfrmpo.org)  
(970) 416-2257



# 2045 REGIONAL TRANSPORTATION PLAN (RTP)



## THE PLAN

- Long range transportation plan and framework for the North Front Range MPO region
- Analyzes existing conditions of the transportation system and demographics
- Sets a vision for the transportation system over the next two decades
- Provides short-term and long-term policies, strategies, and actions
- Guided by public input, performance-based planning, land use and transportation modeling
- Updated every four years

## TODAY

### In 2017, the region is...

- 676 square miles
- 506,000 residents
- 284,000 jobs

### Annually...

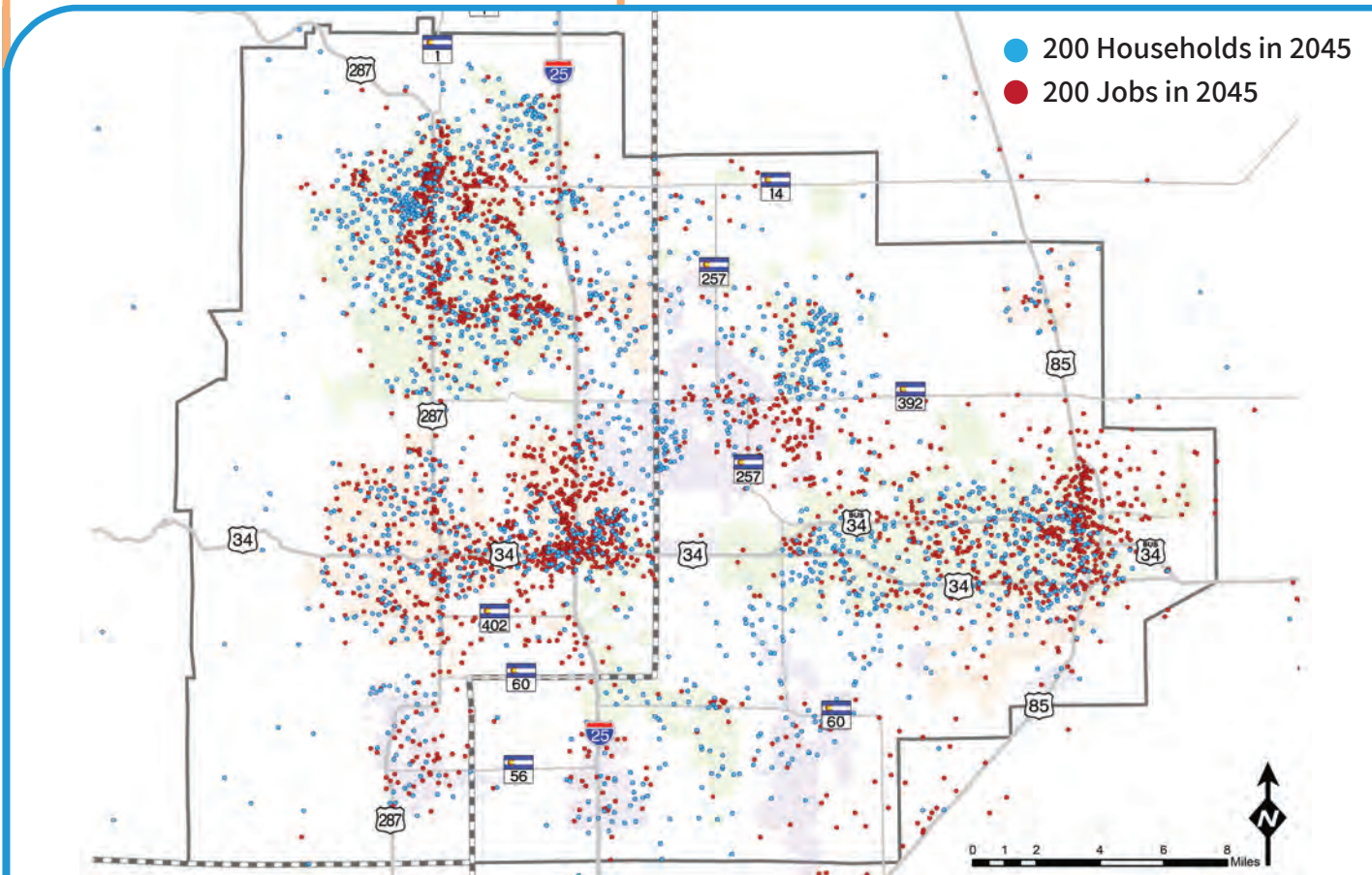
- 3 million regional trail trips
- 4 million transit trips
- 50 billion vehicle miles traveled

## TOMORROW





### In 2045, the region has...

- 884,000 residents
- 473,000 jobs

The NFRMPO will run the 2045 Regional Travel Demand Model to estimate future volumes.

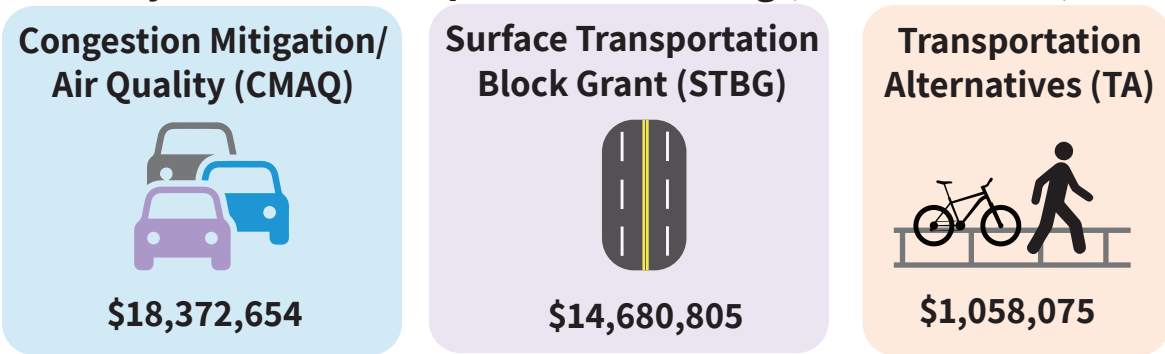


SYSTEM

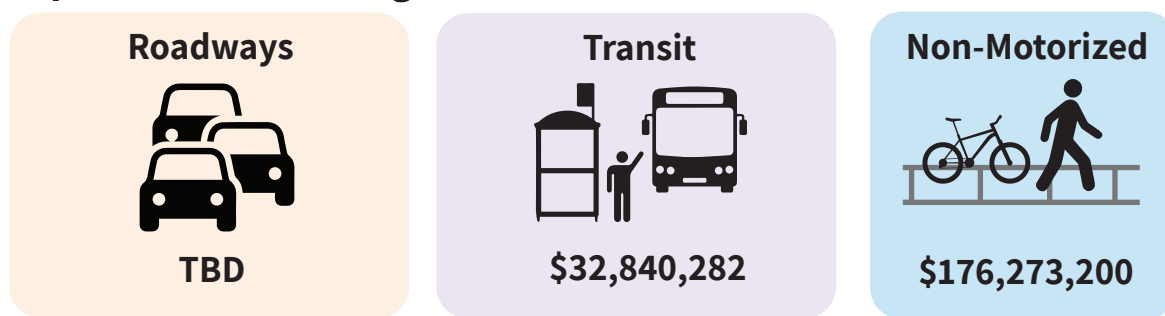
- The transportation system includes:  
 **Roadways**    **Transit**    **Non-Motorized**    **Freight**
- Goals, Objectives, Performance Measures, and Targets (GOPMT) framework:  
 Four key goal areas: **Economic Development and Quality of Life; Mobility; Multi-Modal; and Operations.**
- The Congestion Management Process (CMP), Freight Northern Colorado (FNC), the 2016 Non-Motorized Plan (NMP), and the 2045 Regional Transit Element (RTE) provide additional strategies to achieve the GOPMT and are incorporated into the 2045 RTP.

FINANCING

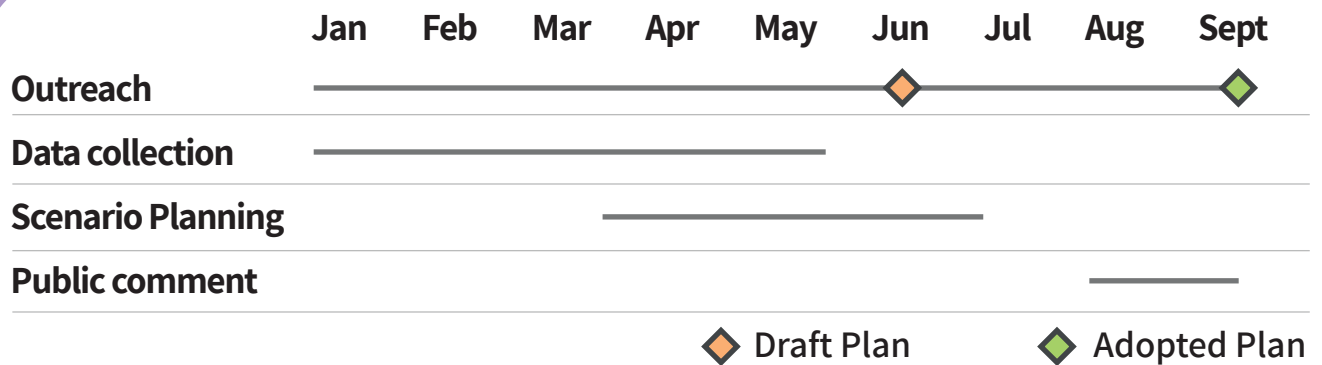
**Recently awarded transportation funding (FFY2020-2023)**



**Expected need through 2045**



SCHEDULE



**Let us know how you want the transportation system to look:**

Tell us...

**How would you describe our region today?**

---

---

---

---

---

---

---

---

---

---

---

---

---

---

---

**What do you want the region to look like in the future?**

---

---

---

---

---

---

---

---

---

---

---

---

---

---

---

