



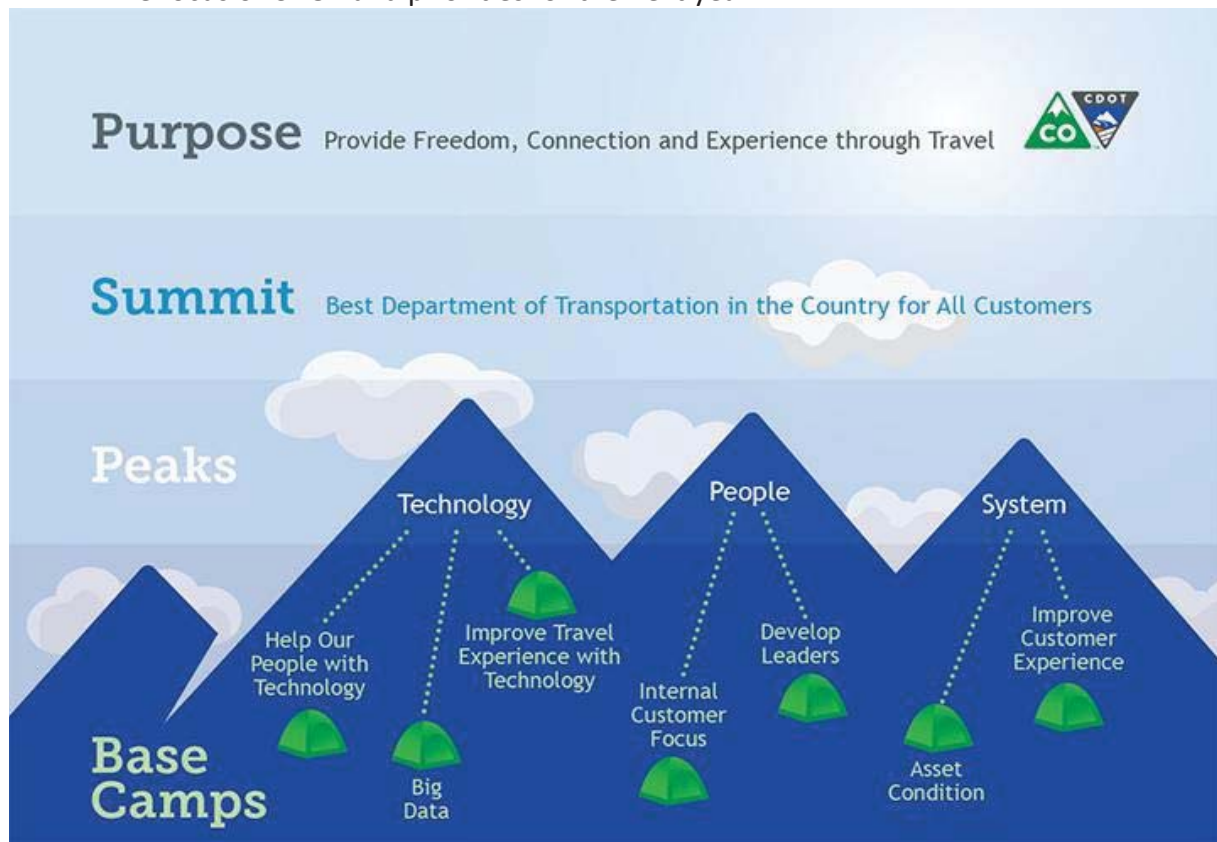
## North Front Range MPO Area - Project Status Updates (5 Jan 2016)

<b><u>Roadway / Segment</u></b>	<b><u>Status</u></b>
<b>SH14</b>	
I-25 to WCR23 Resurfacing	<i>Construction is mostly complete.</i>
Cache La Poudre Bridge (Mulberry)	<i>Construction is complete</i>
US287 PR at Ted's Place	<i>In Design</i>
<b>I-25</b>	
SH392 to Harmony Rubblization	<i>Construction is complete</i>
Crossroads Blvd Interchange / Bridges	<i>On track for April 2016 advertisement</i>
Truck Climbing Lane	<i>Advertisement scheduled in January 2016</i>
GWRR Bridge over I-25 near US34	<i>Construction is complete</i>
Ramp Metering- Harmony Rd SB SH392 NB/SB	<i>In Design</i>
<b>US34</b>	
Big Thompson Canyon Flood Repair	<i>Construction estimated to begin Fall 2015 / Winter 2016</i>
Greeley Bypass Adaptive Signals	<i>Construction is complete</i>
East Greeley Flood PR	<i>Construction continues</i>
Fiber Optic / VMS / Cameras	<i>In Winter shut down</i>
<b>SH56</b>	
Berthoud East Surface Treatment	<i>Slated for Spring 2016 construction</i>
<b>SH60</b>	
SH257 PR	<i>Construction underway</i>
<b>US85</b>	
Ault to Wyoming	<i>Construction is underway</i>
Park & Ride in Evans	<i>Opening estimated January 2016</i>
Adaptive Signals in Greeley	<i>Construction is complete</i>
<b>US287</b>	
SH392 to Harmony Resurf	<i>Complete</i>
Harmony to Mulberry Resurf	<i>In Winter shut down</i>
SH1 to LaPorte Bypass	<i>Construction kicks off late Jan / early Feb 2016</i>
Road damage near Larimer CR 17	<i>In Design</i>
<b>SH392</b>	
Windsor to Lucerne Resurf	<i>Construction is wrapping up</i>
US85 Intersection	<i>In Design.</i>
<b>SH402</b>	
Larimer CR 9E	<i>Ad scheduled for Jan / Feb 2016</i>

**North Front Range (NFR) MPO Council Meeting  
January 7, 2015 at 6PM at the Weld County Administrative Building  
(1150 O Street, Greeley, CO 80631)**

**Shailen Bhatt**

- The focus of CDOT and priorities for the next year



- The new Federal Bill passage and its implications for CDOT
- How Bustang fits into the statewide plan and the importance of transit as part of the mix.
- I-25 with focus on the importance of getting the "managed lane" in to help with trip reliability
- Update on how using the shoulder as an additional lane on West I-70 is working