

2015

Timnath

Community Profile



Image Credit: Susan Dussaman, <http://bit.ly/2vp3m6Y>

About This Document

The *2015 North Front Range Transportation Profile* is a snapshot and inventory of the transportation facilities and services that existed in the region in 2015, as well as the demographic context that shaped them. Establishing a transportation profile allows the NFRMPO to assess the state of the regional transportation system between four-year Regional Transportation Plan (RTP) updates.

This Community Profile is a tool which member jurisdictions and the general public can use to identify the components of their local transportation system, how that system serves the community, and how it fits into the larger regional system.

Preparation of this document has been financed in part through grants from the Federal Highway Administration, the Federal Transit Administration, the Colorado Department of Transportation and the local member communities of the North Front Range MPO.

August 2017

Demographics*

Land Area¹: 5.4 sq. mi.
 Population²: 2,418
 Sex³: 52.5% Female
 47.5% Male
 Median Age⁴: 30.7
 Median HH Size⁵: 2.92
 Median HH Income⁶:
 \$80,694

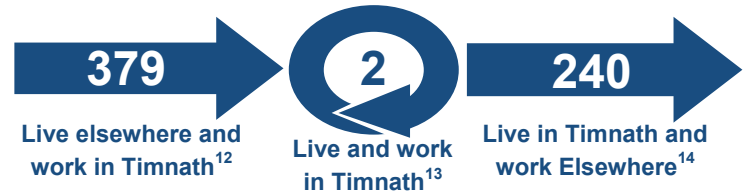
Median Monthly Housing Cost⁷: \$1,766
 Own/Rent Status⁸:
 89.9% Own
 10.1% Rent
 Households with School-Age Children (6 to 17)⁹:
 23.8%

Type of Unit	Residential Building Permits per 1,000 Residents ¹⁰
Single-Family	76.5
Multi-Family	0
Total	76.5

*Demographic estimates are based on survey responses and are subject to error

Economic*

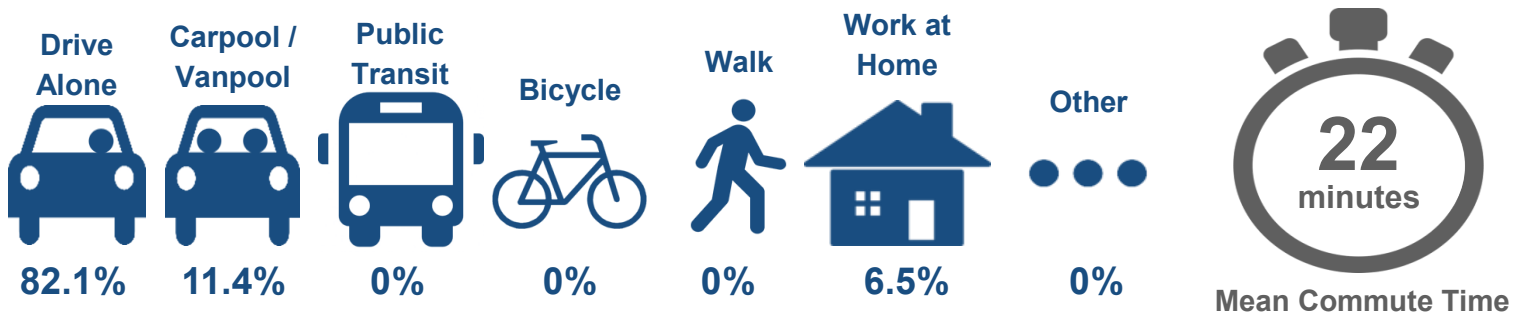
Working Age Population (18 to 64)¹¹: 1,288 (53.3%)



Top 3 Employment Sectors ¹⁵	Number of Jobs	Share of Total Jobs
Retail Trade	129	33.9%
Administration & Support, Waste Management and Remediation	85	22.3%
Manufacturing	59	15.5%

*Economic estimates are based on survey responses and are subject to error

Commutes*^{16, 17}



*Commute estimates are based on survey responses and are subject to error

Roadways

Functional Classification ¹⁸	Centerline Miles
Interstates	0
Other Freeways or Expressways	0
Other Principal Arterials	0
Minor Arterials	4.9
Major Collectors	1
Minor Collectors	2.3
Local Roads	29.4
Total Miles	37.6

Regionally Significant Corridors (RSCs) ²⁰	Centerline Miles
Larimer CR 5 (RSC 15)	3
Harmony Road (RSC 24)	2.2
Prospect Road (RSC 26)	0.1
Total Miles	5.3

Environmental Justice (EJ)*

Environmental Justice (EJ) Areas	Percent of Population
Living in a Low Income EJ Area ²¹	0%
Living in a Minority EJ Area ²²	0%
Living in an EJ Area (Either Low-Income or Minority)	0%

Other Sensitive Populations	Percent of Population
Age 65 or Older ²³	11%
Limited English Proficiency (LEP) ²⁴	0%
Disabled ²⁵	3.3%

*EJ and sensitive population estimates are based on survey responses and are subject to error

Transit

Fixed-Route Service²⁶

- None

Demand-Response/Modified Fixed-Route Service^{27, 28}

- None

Paratransit²⁹

- Non-Emergency Medical Transportation (NEMT)

Commuter Shuttle³⁰

- VanGo™ Vanpool Services

Medical Shuttle³¹

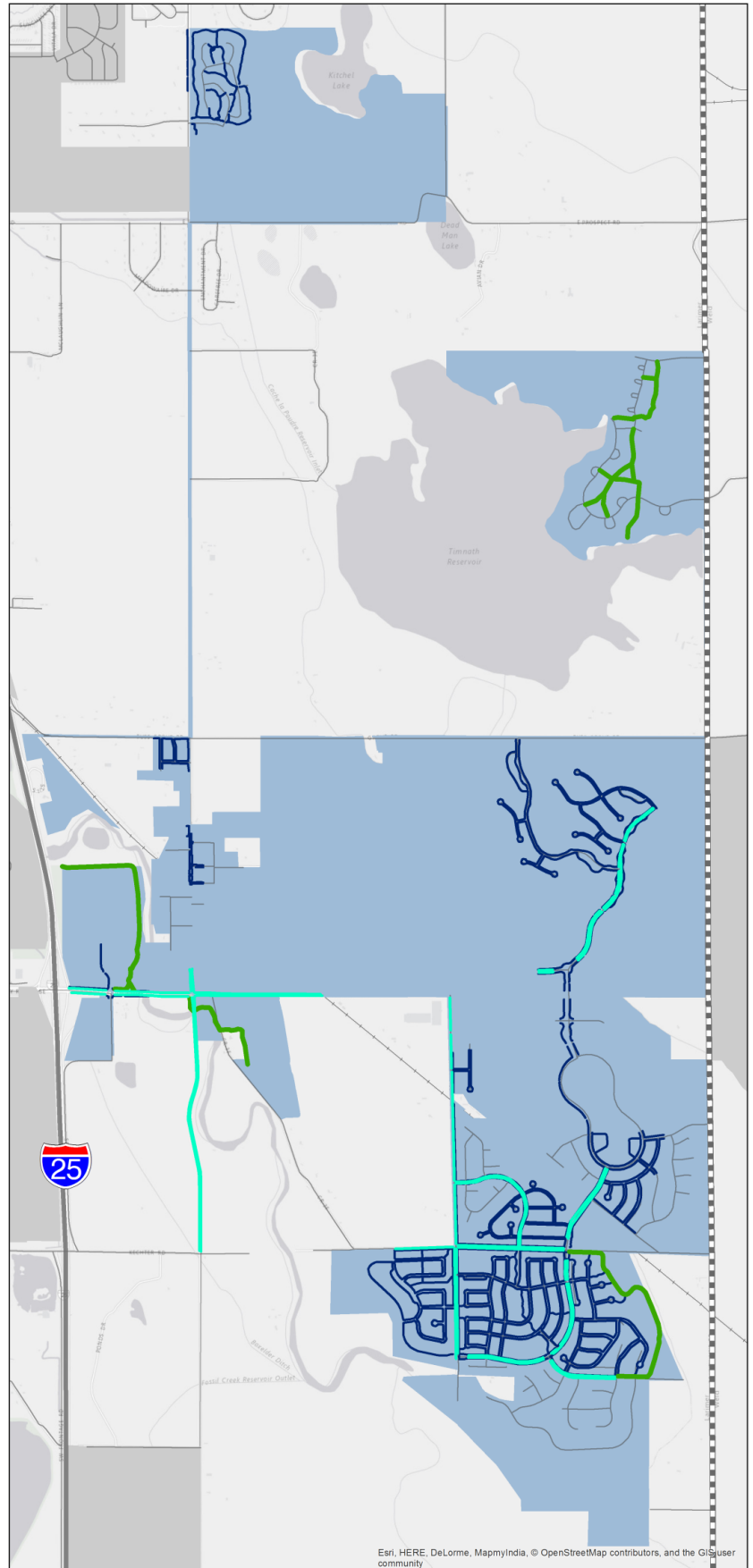
- None

Commercial Service³²

- Sapphire Car Service
- Yellow Cab

Bicycle/Pedestrian Facility	Miles
Sidewalks ³³	26.1
Recreational Trails ³⁴	1.28
Bike Lanes ³⁵	3.4
Bike Routes ³⁶	0
TOTAL	30.78

Non-Motorized



Legend

- County Boundary
- City Boundary
- Bike Lanes
- Recreational Trails
- Bike Routes
- Sidewalks

CDOT Freight Corridors³⁷

None

Railroad

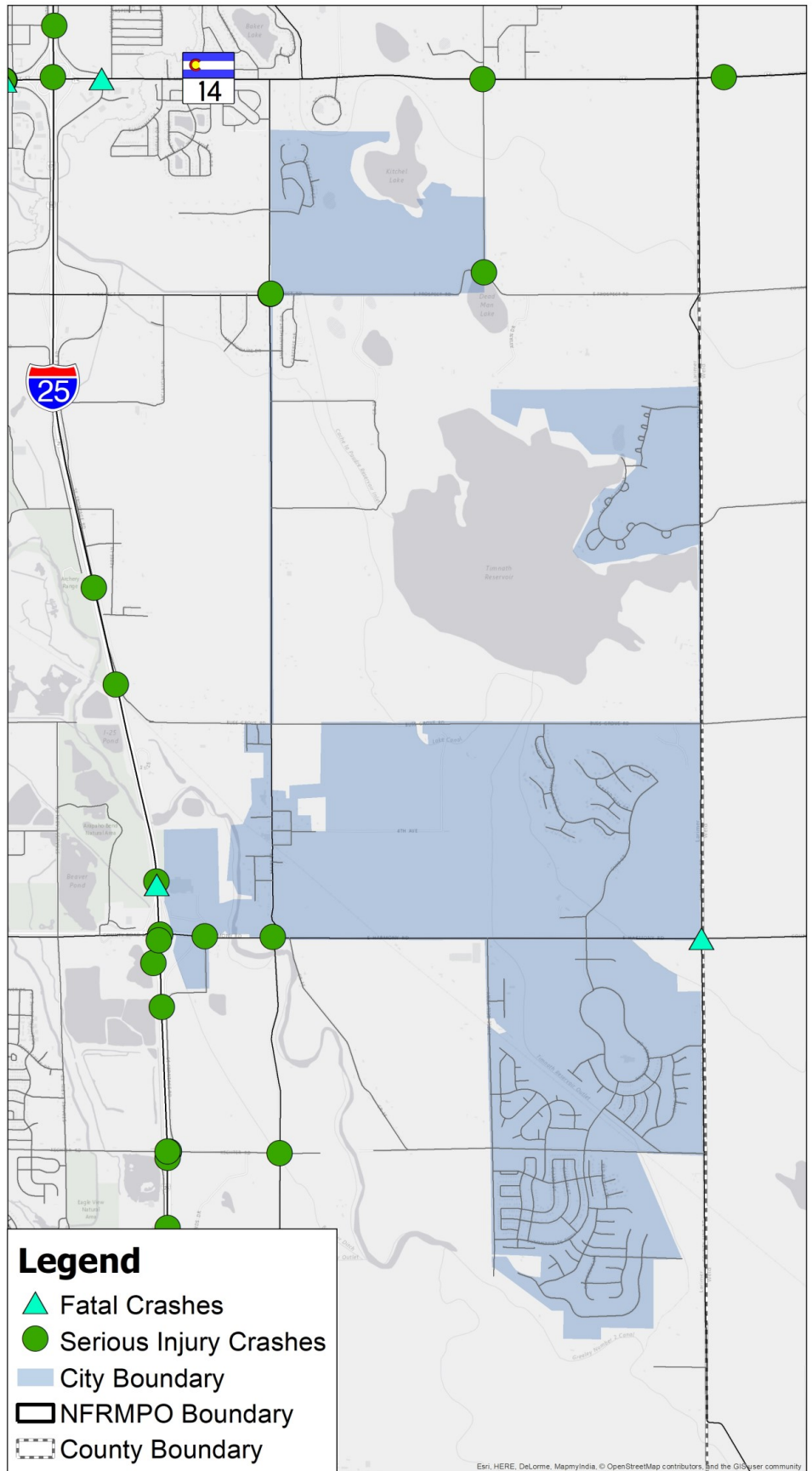
Miles

Great Western Railway

1.8

Year	Serious Injury Crashes ³⁹	Serious Injuries ⁴⁰
2011	0	1
2012	0	0
2013	0	0
2014	3	6
2015	1	1
TOTAL	4	8

Year	Fatal Crashes ⁴¹	Fatalities ⁴²	Total Crashes ⁴³
2011	1	1	39
2012	0	0	41
2013	0	0	24
2014	0	0	57
2015	0	0	47
TOTAL	1	1	208



Data Dictionary

Demographics

- 1. Land Area:** Square Miles within the jurisdictional boundaries (U.S. Census Bureau, 2015 TIGER/Line Shapefiles).
- 2. Population:** Total population living within the jurisdiction (Colorado Department of Local Affairs, State Demography Office [SDO] 2015 Estimate).
- 3. Sex:** Biological sex composition of the population (U.S. Census Bureau, 2011-2015 American Community Survey 5-Year Estimates).
- 4. Median Age:** Median age of the population in years (U.S. Census Bureau, 2011-2015 American Community Survey 5-Year Estimates).
- 5. Median Household (HH) Size:** Median number of people living in a housing unit (Colorado Department of Local Affairs, State Demography Office [SDO] 2015 Estimate).
- 6. Median Household (HH) Income:** Median sum of income of all people 15 years and older living in the household (U.S. Census Bureau, 2011-2015 American Community Survey 5-Year Estimates).
- 7. Median Monthly Housing Cost:** Median monthly owner costs for owner-occupied units and gross rent for renter-occupied units (U.S. Census Bureau, 2011-2015 American Community Survey 5-Year Estimates).
- 8. Own/Rent Status:** Composition of owner-occupied and renter-occupied housing units (U.S. Census Bureau, 2011-2015 American Community Survey 5-Year Estimates).
- 9. Households with School-Aged Children (6 to 17):** Percent of households with children between ages 6 and 17 (U.S. Census Bureau, 2011-2015 American Community Survey 5-Year Estimates).
- 10. Residential Building Permits per 1,000 Residents:** The number of new housing units authorized for every 1,000 existing residents (U.S. Census Bureau, 2015 Building Permits Survey).

Economic

- 11. Working Age Population (18 to 64):** Percent of the population between ages 18 and 64 (U.S. Census Bureau, 2011-2015 American Community Survey 5-Year Estimates).
- 12. Live Elsewhere and Work in the Community:** The number of workers flowing into the community from another community (U.S. Census Bureau, 2015 Longitudinal-Employer Household Dynamics [LEHD] Program, OnTheMap Application).
- 13. Live and Work in the Community:** The number of workers who live and work in the community (U.S. Census Bureau, 2015 Longitudinal-Employer Household Dynamics [LEHD] Program, OnTheMap Application).
- 14. Live in the Community and Work Elsewhere:** The number of workers flowing out of the community to work in another community (U.S. Census Bureau, 2015 Longitudinal-Employer Household Dynamics [LEHD] Program, OnTheMap Application).
- 15. Employment Sectors:** Industries of employment defined by the North American Industry Classification System [NAICS] (Colorado Department of Transportation [CDOT], 2015 NEPA Manual).

Commuting

- 16. Mean Commute Time:** How long it takes the average worker to get from his/her home to his/her usual workplace (U.S. Census Bureau, 2011-2015 American Community Survey 5-Year Estimates).
- 17. Commute Mode:** Composition of how workers get from their home to their usual workplace (U.S. Census Bureau, 2011-2015 American Community Survey 5-Year Estimates).

Roadways

- 18. Functional Classification:** A classification system developed by The Federal Highway Administration [FHWA] that defines the role each element of the roadway network plays in serving travel needs and the design elements that are expected in relation to speed, capacity, and future land use development. (Colorado Department of Transportation [CDOT], Online Transportation Information System [OTIS]).
- 19. Highway Drivability Life:** An indication of pavement condition, measured in years of how long a highway will have acceptable driving conditions based on an assessment of smoothness, pavement distress, and safety. A roadway can be classified as High, Moderate, or Low. Measures state highways and above (Colorado Department of Transportation [CDOT], Online Transportation Information System [OTIS]).
- 20. Regionally Significant Corridors (RSCs):** Corridors identified in the 2040 Regional Transportation Plan (RTP) as most significant to the region (*NFRMPO 2040 Regional Transportation Plan*).

Environmental Justice (EJ)

- 21. Living in a Low-Income EJ Area:** Percent of the population living in a Census Tract with a median household income below the FY2015 low-income thresholds developed by for the county. For EJ Analysis, Low-Income EJ Areas are defined as Census Tracts with a median income below 30 percent of the FY2012 median county income by the average household size of the Census Tract, as defined by the Department of Housing and Urban Development [HUD] (Colorado Department of Transportation [CDOT], 2015 NEPA Manual).
- 22. Living in a Minority EJ Area:** Percent of the population living in a Census Tract where a higher percent of the population identifies as something other than “Not Hispanic or Latino: White Alone” than the county average (U.S. Census Bureau, 2011-2015 American Community Survey 5-Year Estimates).
- 23. Age 65 or Older:** Percent of population that is 65 years of age or older (U.S. Census Bureau, 2011-2015 American Community Survey 5-Year Estimates).
- 24. Limited English Proficiency (LEP):** Percent of respondents who speak a language other than English at home and who speaks English “less than very well” (U.S. Census Bureau, 2011-2015 American Community Survey 5-Year Estimates).
- 25. Disabled:** Percent of the population with a long-lasting physical, mental, or emotional, condition (U.S. Census Bureau, 2011-2015 American Community Survey 5-Year Estimates).

Transit

- 26. Fixed-Route:** Buses which run along an established path at preset times, picking up passengers at designated bus stops.
- 27. Demand Response:** Vehicles operating in response to calls from passengers.
- 28. Modified Fixed-Route:** Fixed route service with some flexibility in drop off
- 29. Paratransit:** Transportation service primarily intended for persons with disabilities and the elderly. Operates in response to calls from passengers. Application required to determine eligibility for service.
- 30. Commuter Shuttle:** Limited route structure connecting commuters to a limited number of origins and destinations.
- 31. Medical Shuttle:** Limited route structure connecting patients to a limited number of origins and destinations.
- 32. Commercial Service:** Vehicle with driver for hire to carry passengers between any two points for a fare determined by a meter or a flat rate.

Non-Motorized

- 33. Sidewalks:** an off-street paved path mainly for pedestrians, but also accessible to cyclists unless prohibited (Community and NFRMPO Staff).
- 34. Recreational Trails:** a hard or soft surface trail designed to be used by commuters and recreationalists. These facilities are accessible to bicycles, pedestrians, equestrians, and other non-motorized users (Community and NFRMPO Staff).
- 35. Bike Lanes:** an on-street bicycle facility delineated by pavement markings and signage for the use of cyclists. Typically located on roadways with a classification of collector and above (Community and NFRMPO Staff).
- 36. Bike Routes:** an on-street bicycle facility, delineated by signage only. These facilities tend to be located on lower volume residential streets or in semi-rural areas (Community and NFRMPO Staff).

Freight

- 37. CDOT Freight Corridor:** Routes on the State Highway System identified by the freight industry and stakeholders as critical for the movement of freight (Colorado Department of Transportation (CDOT), Online Transportation Information System [OTIS]).
- 38. Percent Trucks:** The percent of AADT that is composed of trucks of all types. Calculated by taking the number of trucks divided by the AADT (Colorado Department of Transportation (CDOT), Online Transportation Information System [OTIS]).

Crash Analysis

- 39. Serious Injury Crashes:** Number of crashes resulting in at least one incapacitating injury [see Serious Injuries] (Colorado Department of Transportation, 2015).
- 40. Serious Injuries:** Number of person(s) with an incapacitating injury due to a traffic crash. Incapacitating injuries include any injury (other than a fatal injury) that prevents the injured person from walking, driving, or normally continuing the activities the person was capable of performing before the injury. Examples include severe lacerations, broken limbs, and skull, chest, or abdominal injuries. Momentary unconsciousness is not included (Colorado Department of Transportation, 2015).
- 41. Fatal Crashes:** Number of crashes wherein an involved party sustains a crash related injury that results in death within 30 days of the crash (Colorado Department of Transportation, 2015).
- 42. Fatalities:** Number of person(s) who sustain a crash-related injury that results in death within 30 days of the crash (Colorado Department of Transportation, 2015).
- 43. Total Crashes:** Number of crashes reported by law enforcement agencies (Colorado Department of Transportation, 2015).

North Front Range Metropolitan Planning Organization (NFRMPO)

419 Canyon Avenue | Suite 300

Fort Collins, CO 80521

Phone: (970)221-6243

Email: staff@nfrmpo.org

 @nfrmpo

 facebook.com/nfrmpo

 nfrmpo.blogspot.com

