

2015

# Fort Collins

## Community Profile



Image Credit: City of Fort Collins

### About This Document

The *2015 North Front Range Transportation Profile* is a snapshot and inventory of the transportation facilities and services that existed in the region in 2015, as well as the demographic context that shaped them. Establishing a transportation profile allows the NFRMPO to assess the state of the regional transportation system between four-year Regional Transportation Plan (RTP) updates.

This Community Profile is a tool which member jurisdictions and the general public can use to identify the components of their local transportation system, how that system serves the community, and how it fits into the larger regional system.

**Preparation of this document has been financed in part through grants from the Federal Highway Administration, the Federal Transit Administration, the Colorado Department of Transportation and the local member communities of the North Front Range MPO.**

**August 2017**

# Fort Collins Community Profile

2015

## Demographics\*

Land Area<sup>1</sup>: 57 sq. mi.  
 Population<sup>2</sup>: 160,935  
 Sex<sup>3</sup>: 50.1% Female  
 49.9% Male  
 Median Age<sup>4</sup>: 29.3  
 Median HH Size<sup>5</sup>: 2.37  
 Median HH Income<sup>6</sup>: \$55,647

Median Monthly Housing Cost<sup>7</sup>: \$1,184  
 Own/Rent Status<sup>8</sup>:  
 53.9% Own  
 46.1% Rent  
 Households with School-Age Children (6 to 17)<sup>9</sup>: 16.7%

Type of Unit	Residential Building Permits per 1,000 Residents <sup>10</sup>
Single-Family	3.2
Multi-Family	0.3
<b>TOTAL</b>	<b>3.5</b>

\*Demographic estimates are based on survey responses and are subject to error

## Economic\*

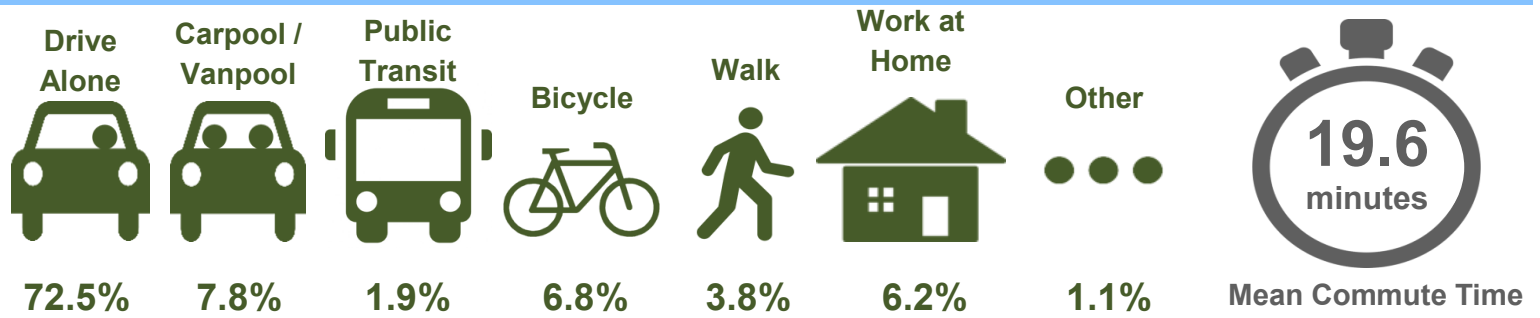
Working Age Population (18 to 64)<sup>11</sup>: 114,907 (71.4%)



Top 3 Employment Sectors <sup>15</sup>	Number of Jobs	Share of Total Jobs
Health Care and Social Assistance	12,125	16.3%
Educational Services	9,450	12.7%
Accommodation and Food Services	8,957	12%

\*Economic estimates are based on survey responses and are subject to error

## Commutes\*<sup>16, 17</sup>

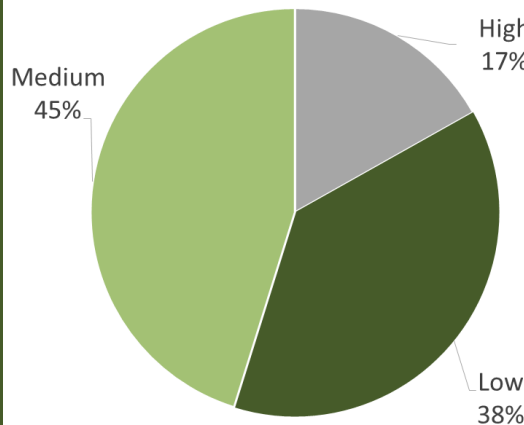


\*Commute estimates are based on survey responses and are subject to error

## Roadways

Functional Classification <sup>18</sup>	Centerline Miles
Interstates	7.4
Other Freeways or Expressways	0
Other Principal Arterials	10.7
Minor Arterials	87.2
Major Collectors	40.3
Minor Collectors	0
Local Roads	448.7
<b>TOTAL</b>	<b>591.5</b>

## Highway Drivability Life<sup>19</sup>



Regionally Significant Corridors (RSCs) <sup>20</sup>	Centerline Miles
I-25 (RSC 1)	7.4
College Ave. (RSC 6)	8.8
SH 1 (RSC 7)	0.1
Riverside Ave / SH 14 (RSC 8)	1.9
Carpenter Road / SH 392 (RSC12)	2
Larimer CR 5 (RSC 15)	0.25
Shields St. / Larimer CR 17 (RSC 16)	8
Taft Hill Road / Larimer CR 19 (RSC 17)	6.1
Larimer CR 38 / Harmony Road (RSC 24)	5.3
SH 14 / Mulberry St (RSC 25)	2.7
Prospect Road (RSC 26)	4.5
Timberline Road / Larimer CR 11 (RSC 27)	7
<b>TOTAL</b>	<b>54.1</b>

## Environmental Justice (EJ)\*

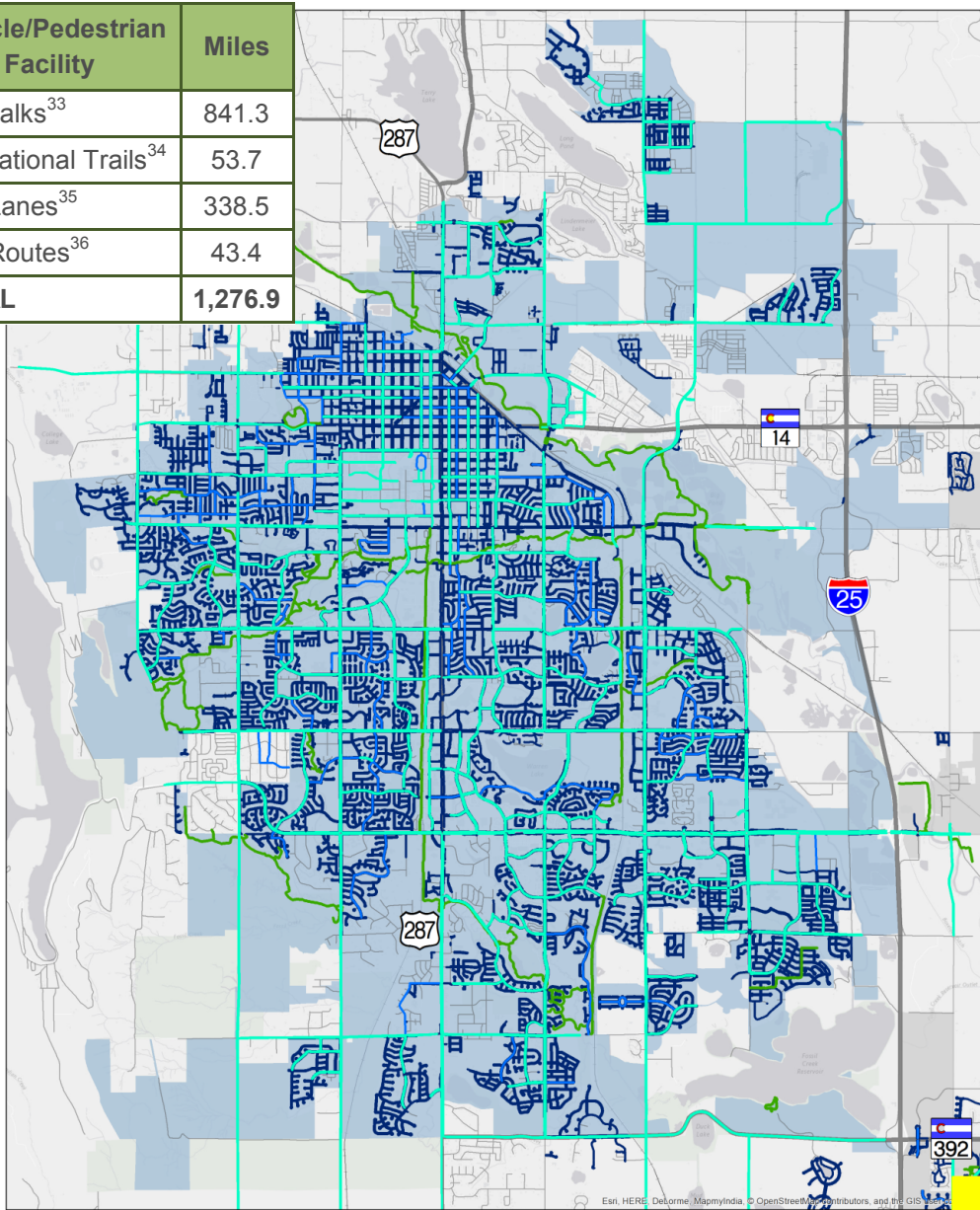
Environmental Justice (EJ) Areas	Percent of Population
Living in a Low Income EJ Area <sup>21</sup>	44.8%
Living in a Minority EJ Area <sup>22</sup>	11.9%
Living in an EJ Area (Either Low-Income or Minority)	<b>46.2%</b>

Other Sensitive Populations	Percent of Population
Age 65 or Older <sup>23</sup>	9.4%
Limited English Proficiency (LEP) <sup>24</sup>	2.3%
Disabled <sup>25</sup>	7.7%

\*EJ and sensitive population estimates are based on survey responses and are subject to error

## Non-Motorized

Bicycle/Pedestrian Facility	Miles
Sidewalks <sup>33</sup>	841.3
Recreational Trails <sup>34</sup>	53.7
Bike Lanes <sup>35</sup>	338.5
Bike Routes <sup>36</sup>	43.4
<b>TOTAL</b>	<b>1,276.9</b>



### Legend

■ City Boundary   
 ■ Bike Lanes   
 ■ Bike Routes   
 ■ Recreational Trails   
 ■ Sidewalks

## Transit

### Demand-Response/Modified Fixed-Route<sup>27, 28</sup>

- Senior Alternatives in Transportation (SAINT)

### Paratransit<sup>29</sup>

- Transfort Dail-A-Ride
- Non-Emergency Medical Transportation (NEMT)

### Commuter Shuttle<sup>30</sup>

- Bustang
- FLEX
- VanGo™ Vanpool Services

### Medical Shuttle<sup>31</sup>

- Connecting Health

### Commercial Service<sup>32</sup>

- Sapphire Car Service
- Yellow Cab

## Fixed-Route Service Provider<sup>26</sup>:

Transfort

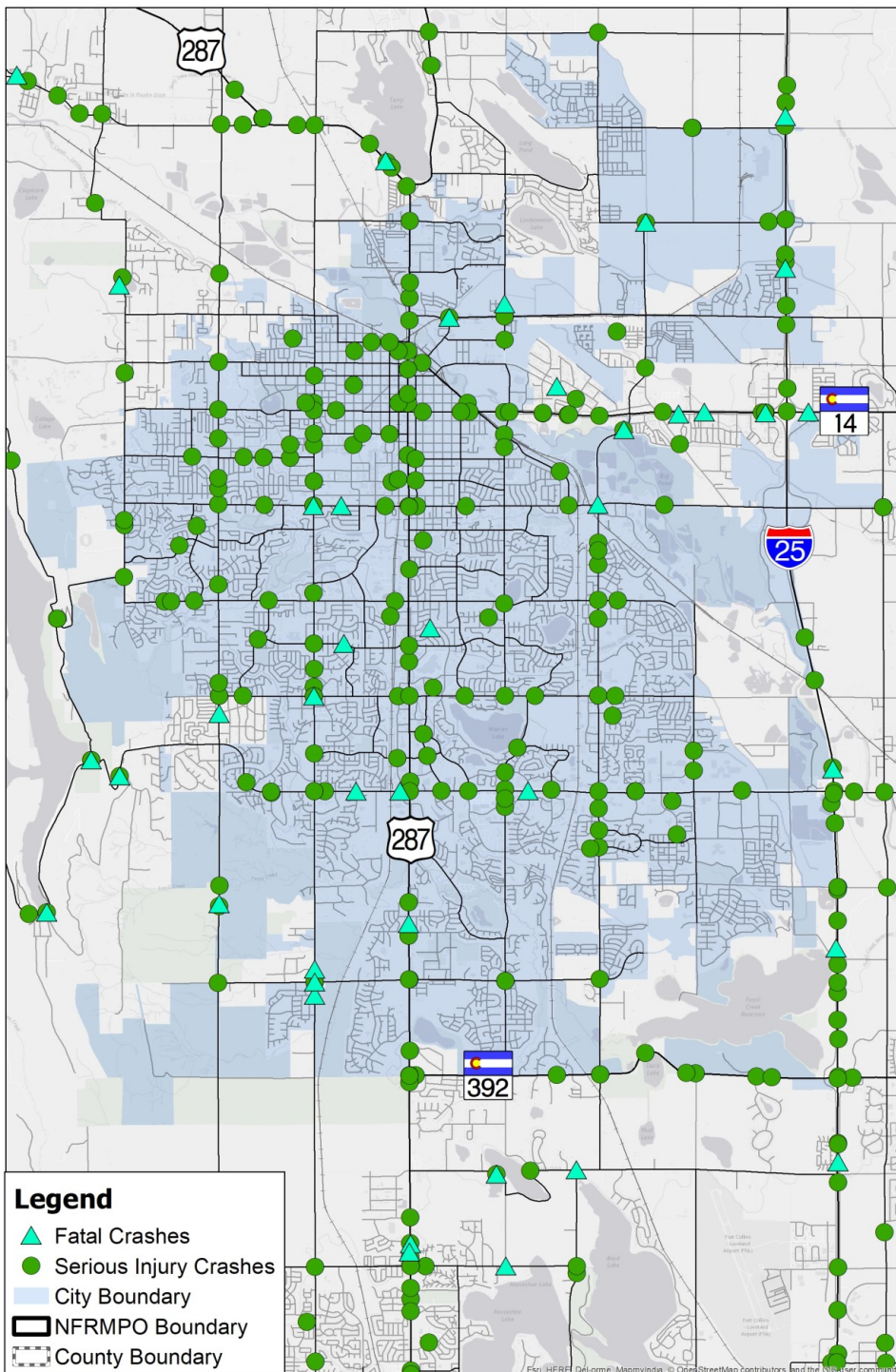
Fixed Route	Service Miles	Stops
Route 2	6.7	26
Route 5	12.1	40
Route 6	15	64
Route 7	14.1	54
Route 8	5.7	25
Route 9	4.9	29
Route 10	5.9	22
Route 12	15.6	56
Route 14	5.5	26
Route 16	11	25
Route 18	9.5	33
Route 19	12.4	40
Route 31	2.5	13
Route 32	6.5	28
Route 33	3.2	29
Route 81	5.6	21
Route 91	2.8	12
Route 92	4.9	20
FLEX	5.4	8
Gold Route	9	34
Green Route	9.1	30
HORN	4.8	24
MAX	5.3	20
<b>TOTAL</b>	<b>177.5</b>	<b>679</b>

CDOT Freight Corridors <sup>37</sup>	Miles	Percent Trucks <sup>38</sup>
I-25	7.4	11.7%
SH 14	2.7	5.6%
US 287	8.8	3.8%
<b>TOTAL</b>	<b>18.9</b>	<b>5.9%</b>

Railroad	Miles
BNSF	12.5
Great Western Railway	5.4
Union Pacific	11.3
<b>TOTAL</b>	<b>29.2*</b>

*\*Fort Collins has 1.3 additional miles of abandoned railroad*

## Crash Analysis (2011-2015)



Year	Serious Injury Crashes <sup>39</sup>	Serious Injuries <sup>40</sup>
2011	21	26
2012	39	42
2013	46	48
2014	36	41
2015	41	45
<b>TOTAL</b>	<b>183</b>	<b>202</b>

Year	Fatal Crashes <sup>41</sup>	Fatalities <sup>42</sup>	Total Crashes <sup>43</sup>
2011	4	4	3,237
2012	4	4	3,182
2013	3	3	3,290
2014	5	6	3,721
2015	4	4	3,630
<b>TOTAL</b>	<b>20</b>	<b>21</b>	<b>17,060</b>

Sources: Demographics—American Community Survey, Census Building Permits Survey; Commutes—American Community Survey; Economics—Census OnTheMap; Environmental Justice—American Community Survey, HUD; Roadways—CDOT; Transit—Transfort, NFRMPO; Non-Motorized—NFRMPO; Freight—CDOT; Crash Analysis—CDOT

# Data Dictionary

## Demographics

- 1. Land Area:** Square Miles within the jurisdictional boundaries (U.S. Census Bureau, 2015 TIGER/Line Shapefiles).
- 2. Population:** Total population living within the jurisdiction (Colorado Department of Local Affairs, State Demography Office [SDO] 2015 Estimate).
- 3. Sex:** Biological sex composition of the population (U.S. Census Bureau, 2011-2015 American Community Survey 5-Year Estimates).
- 4. Median Age:** Median age of the population in years (U.S. Census Bureau, 2011-2015 American Community Survey 5-Year Estimates).
- 5. Median Household (HH) Size:** Median number of people living in a housing unit (Colorado Department of Local Affairs, State Demography Office [SDO] 2015 Estimate).
- 6. Median Household (HH) Income:** Median sum of income of all people 15 years and older living in the household (U.S. Census Bureau, 2011-2015 American Community Survey 5-Year Estimates).
- 7. Median Monthly Housing Cost:** Median monthly owner costs for owner-occupied units and gross rent for renter-occupied units (U.S. Census Bureau, 2011-2015 American Community Survey 5-Year Estimates).
- 8. Own/Rent Status:** Composition of owner-occupied and renter-occupied housing units (U.S. Census Bureau, 2011-2015 American Community Survey 5-Year Estimates).
- 9. Households with School-Aged Children (6 to 17):** Percent of households with children between ages 6 and 17 (U.S. Census Bureau, 2011-2015 American Community Survey 5-Year Estimates).
- 10. Residential Building Permits per 1,000 Residents:** The number of new housing units authorized for every 1,000 existing residents (U.S. Census Bureau, 2015 Building Permits Survey).

## Economic

- 11. Working Age Population (18 to 64):** Percent of the population between ages 18 and 64 (U.S. Census Bureau, 2011-2015 American Community Survey 5-Year Estimates).
- 12. Live Elsewhere and Work in the Community:** The number of workers flowing into the community from another community (U.S. Census Bureau, 2015 Longitudinal-Employer Household Dynamics [LEHD] Program, OnTheMap Application).
- 13. Live and Work in the Community:** The number of workers who live and work in the community (U.S. Census Bureau, 2015 Longitudinal-Employer Household Dynamics [LEHD] Program, OnTheMap Application).
- 14. Live in the Community and Work Elsewhere:** The number of workers flowing out of the community to work in another community (U.S. Census Bureau, 2015 Longitudinal-Employer Household Dynamics [LEHD] Program, OnTheMap Application).
- 15. Employment Sectors:** Industries of employment defined by the North American Industry Classification System [NAICS] (Colorado Department of Transportation [CDOT], 2015 NEPA Manual).

## Commuting

- 16. Mean Commute Time:** How long it takes the average worker to get from his/her home to his/her usual workplace (U.S. Census Bureau, 2011-2015 American Community Survey 5-Year Estimates).
- 17. Commute Mode:** Composition of how workers get from their home to their usual workplace (U.S. Census Bureau, 2011-2015 American Community Survey 5-Year Estimates).

## Roadways

- 18. Functional Classification:** A classification system developed by The Federal Highway Administration [FHWA] that defines the role each element of the roadway network plays in serving travel needs and the design elements that are expected in relation to speed, capacity, and future land use development. (Colorado Department of Transportation [CDOT], Online Transportation Information System [OTIS]).
- 19. Highway Drivability Life:** An indication of pavement condition, measured in years of how long a highway will have acceptable driving conditions based on an assessment of smoothness, pavement distress, and safety. A roadway can be classified as High, Moderate, or Low. Measures state highways and above (Colorado Department of Transportation [CDOT], Online Transportation Information System [OTIS]).
- 20. Regionally Significant Corridors (RSCs):** Corridors identified in the 2040 Regional Transportation Plan (RTP) as most significant to the region (*NFRMPO 2040 Regional Transportation Plan*).

## Environmental Justice (EJ)

- 21. Living in a Low-Income EJ Area:** Percent of the population living in a Census Tract with a median household income below the FY2015 low-income thresholds developed by for the county. For EJ Analysis, Low-Income EJ Areas are defined as Census Tracts with a median income below 30 percent of the FY2012 median county income by the average household size of the Census Tract, as defined by the Department of Housing and Urban Development [HUD] (Colorado Department of Transportation [CDOT], 2015 NEPA Manual).
- 22. Living in a Minority EJ Area:** Percent of the population living in a Census Tract where a higher percent of the population identifies as something other than “Not Hispanic or Latino: White Alone” than the county average (U.S. Census Bureau, 2011-2015 American Community Survey 5-Year Estimates).
- 23. Age 65 or Older:** Percent of population that is 65 years of age or older (U.S. Census Bureau, 2011-2015 American Community Survey 5-Year Estimates).
- 24. Limited English Proficiency (LEP):** Percent of respondents who speak a language other than English at home and who speaks English “less than very well” (U.S. Census Bureau, 2011-2015 American Community Survey 5-Year Estimates).
- 25. Disabled:** Percent of the population with a long-lasting physical, mental, or emotional, condition (U.S. Census Bureau, 2011-2015 American Community Survey 5-Year Estimates).

## Transit

- 26. Fixed-Route:** Buses which run along an established path at preset times, picking up passengers at designated bus stops.
- 27. Demand Response:** Vehicles operating in response to calls from passengers.
- 28. Modified Fixed-Route:** Fixed route service with some flexibility in drop off
- 29. Paratransit:** Transportation service primarily intended for persons with disabilities and the elderly. Operates in response to calls from passengers. Application required to determine eligibility for service.
- 30. Commuter Shuttle:** Limited route structure connecting commuters to a limited number of origins and destinations.
- 31. Medical Shuttle:** Limited route structure connecting patients to a limited number of origins and destinations.
- 32. Commercial Service:** Vehicle with driver for hire to carry passengers between any two points for a fare determined by a meter or a flat rate.

## Non-Motorized

- 33. Sidewalks:** an off-street paved path mainly for pedestrians, but also accessible to cyclists unless prohibited (Community and NFRMPO Staff).
- 34. Recreational Trails:** a hard or soft surface trail designed to be used by commuters and recreationalists. These facilities are accessible to bicycles, pedestrians, equestrians, and other non-motorized users (Community and NFRMPO Staff).
- 35. Bike Lanes:** an on-street bicycle facility delineated by pavement markings and signage for the use of cyclists. Typically located on roadways with a classification of collector and above (Community and NFRMPO Staff).
- 36. Bike Routes:** an on-street bicycle facility, delineated by signage only. These facilities tend to be located on lower volume residential streets or in semi-rural areas (Community and NFRMPO Staff).

## Freight

- 37. CDOT Freight Corridor:** Routes on the State Highway System identified by the freight industry and stakeholders as critical for the movement of freight (Colorado Department of Transportation (CDOT), Online Transportation Information System [OTIS]).
- 38. Percent Trucks:** The percent of AADT that is composed of trucks of all types. Calculated by taking the number of trucks divided by the AADT (Colorado Department of Transportation (CDOT), Online Transportation Information System [OTIS]).

## Crash Analysis

- 39. Serious Injury Crashes:** Number of crashes resulting in at least one incapacitating injury [see Serious Injuries] (Colorado Department of Transportation, 2015).
- 40. Serious Injuries:** Number of person(s) with an incapacitating injury due to a traffic crash. Incapacitating injuries include any injury (other than a fatal injury) that prevents the injured person from walking, driving, or normally continuing the activities the person was capable of performing before the injury. Examples include severe lacerations, broken limbs, and skull, chest, or abdominal injuries. Momentary unconsciousness is not included (Colorado Department of Transportation, 2015).
- 41. Fatal Crashes:** Number of crashes wherein an involved party sustains a crash related injury that results in death within 30 days of the crash (Colorado Department of Transportation, 2015).
- 42. Fatalities:** Number of person(s) who sustain a crash-related injury that results in death within 30 days of the crash (Colorado Department of Transportation, 2015).
- 43. Total Crashes:** Number of crashes reported by law enforcement agencies (Colorado Department of Transportation, 2015).

North Front Range Metropolitan Planning Organization (NFRMPO)

419 Canyon Avenue | Suite 300

Fort Collins, CO 80521

Phone: (970)221-6243

Email: [staff@nfrmpo.org](mailto:staff@nfrmpo.org)

 @nfrmpo

 [facebook.com/nfrmpo](https://facebook.com/nfrmpo)

 [nfrmpo.blogspot.com](http://nfrmpo.blogspot.com)

